

FED. SPEC. THIMBLE

316 STAINLESS STEEL



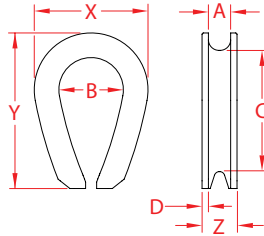
Import



Stamped



Suncor
Exclusive



ITEM	A (size)	B	C	D	X (height)	Y (length)	Z (width)	WT (lb)	PACKAGING TYPE	EACH (qty)	INNER (qty)	CARTON (qty)	UPC
S0123-FS05	3/16"	0.72"	1.35"	0.05"	1.20"	1.82"	0.40"	0.03	POLYBAG	1	10	500	791506031703
S0123-FS07	1/4"	0.90"	1.63"	0.07"	1.47"	2.22"	0.50"	0.07	POLYBAG	1	10	300	791506031710
S0123-FS08	5/16"	1.08"	1.88"	0.08"	1.81"	2.75"	0.61"	0.14	POLYBAG	1	10	200	791506031727
S0123-FS10	3/8"	1.13"	2.13"	0.11"	2.10"	2.96"	0.70"	0.23	POLYBAG	1	10	100	791506031734
S0123-FS12	7/16"	1.25"	2.38"	0.13"	2.32"	3.28"	0.84"	0.29	POLYBAG	1	10	50	791506031741
S0123-FS13	1/2"	1.52"	2.63"	0.15"	2.75"	3.68"	0.95"	0.54	POLYBAG	1	1	40	791506031758
S0123-FS14	9/16"	1.50"	2.94"	0.15"	2.70"	3.65"	0.93"	0.49	POLYBAG	1	1	40	791506031765
S0123-FS16	5/8"	1.78"	3.25"	0.16"	3.26"	4.45"	1.10"	0.87	POLYBAG	1	1	25	791506031789
S0123-FS20	3/4"	2.02"	3.83"	0.22"	3.85"	5.18"	1.29"	1.32	POLYBAG	1	1	10	791506031796
S0123-FS22	7/8"	2.30"	4.25"	0.22"	4.25"	5.88"	1.55"	1.93	POLYBAG	1	1	8	791506031802
S0123-FS25	1"	2.56"	4.80"	0.25"	4.85"	6.62"	1.65"	3.27	POLYBAG	1	1	8	791506031819
S0123-FS32	1-1/4"	2.88"	5.38"	0.25"	5.63"	7.69"	2.17"	3.36	POLYBAG	1	1	5	791506031833

NOTE:
HEAVY DUTY VERSION. DIMENSIONS AND WORKING LOAD ARE TO FEDERAL SPECIFICATION: FF-T-276B, TYPE III.
ALL DIMENSIONS ARE NOMINAL (+/- 3%) AND ARE SUBJECT TO CHANGE WITHOUT NOTICE.